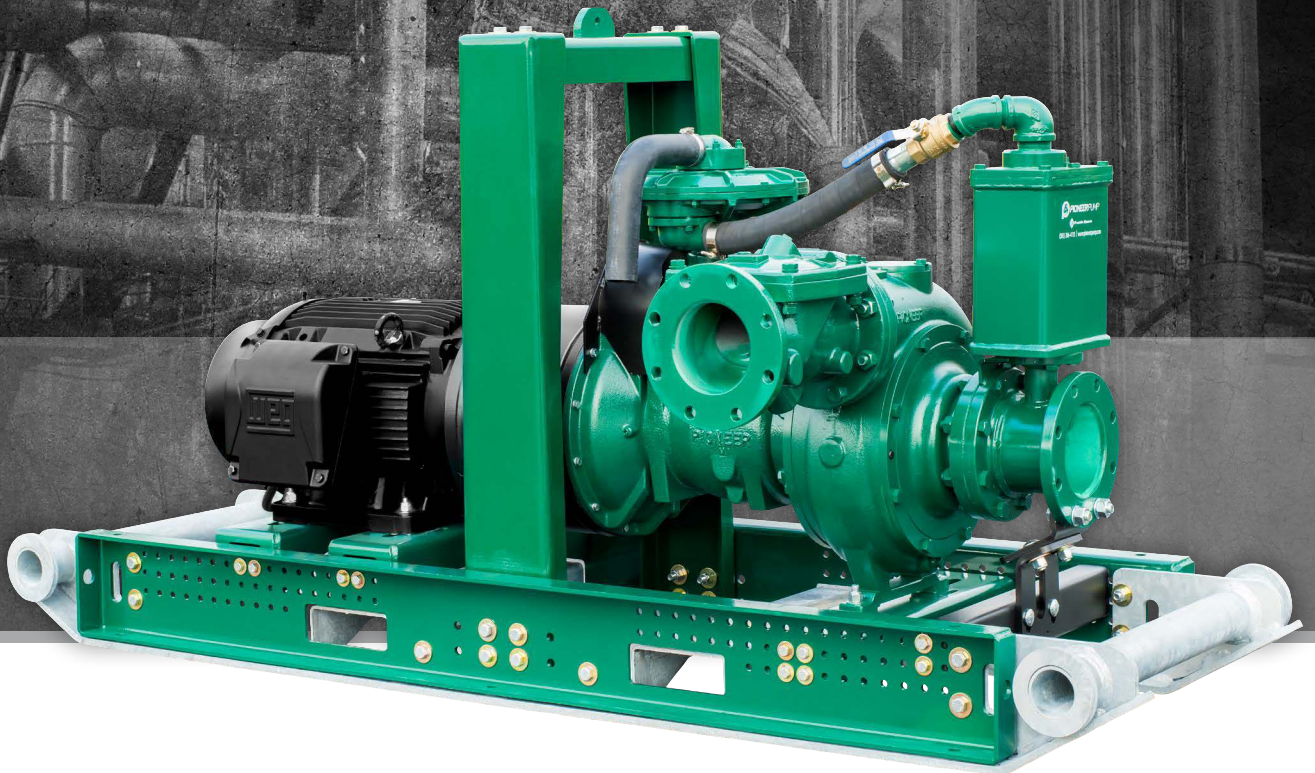




Franklin Electric

ELECTRICPAK™

ELECTRIC-DRIVEN PUMP PACKAGES



pioneerpump.com

 **PIONEER PUMP**

YOUR PARTNER FOR **WATER SYSTEMS**



ABOUT FRANKLIN ELECTRIC

Franklin Electric is a global provider of complete systems for the movement of water.



ABOUT PIONEER PUMP

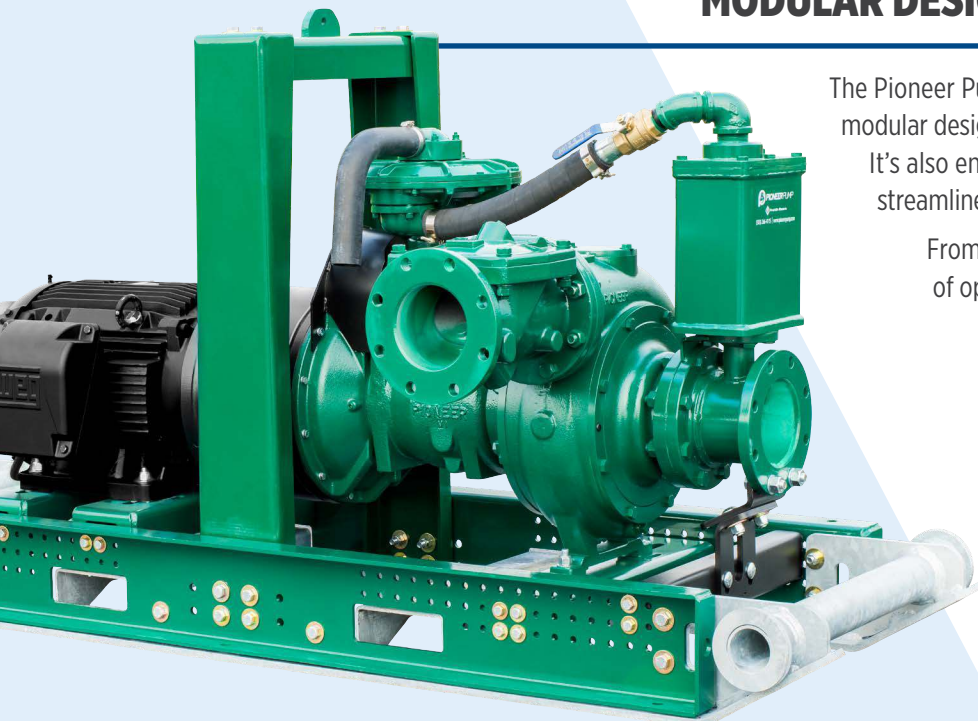
Pioneer Pump, a brand of Franklin Electric, specializes in the engineering and manufacturing of large centrifugal pumps and packages.



HIGH PERFORMANCE PUMPS

Transport water and wastewater for any sized job with our proven portfolio of centrifugal pumps.

MODULAR DESIGN. QUICK TURNAROUND.



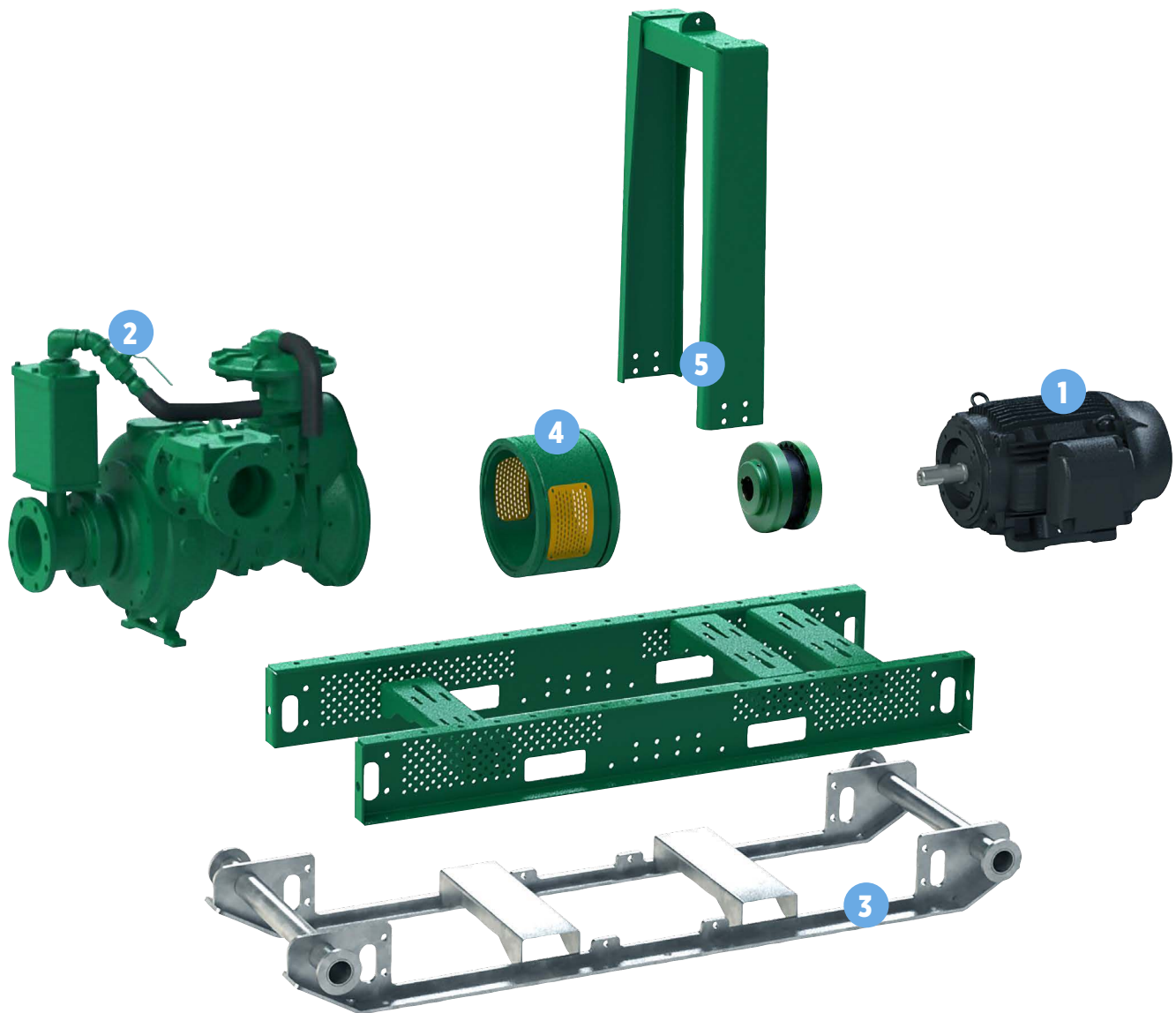
The Pioneer Pump® ElectricPAK™ delivers more than just a modular design that can arrive on-site and startup quickly. It's also engineered from the ground up to offer a fully streamlined experience for both owners and operators.

From initial selection, to installation, to a lifetime of operation: durability and performance are built into every component. Each configured assembly includes high-performance pumps and electric motors with an optional variable frequency drive (VFD) that provides total system optimization.

ElectricPAK



ENGINEERED WITH YOUR NEEDS IN MIND



1 PREMIUM EFFICIENCY ELECTRIC MOTORS

- Extensive range of motor options, from 5 to 350 hp (5.5 to 250 kw), allowing users to select the most efficient pump for the duty point
- Eliminates complicated diesel engine aftertreatment systems and delivers quiet, reliable operation

2 HIGH PERFORMANCE PUMPS

- Available from 3" to 12" (80 to 300 mm) sizes
- Vacuum-assisted and standard centrifugal pump configurations
- Stainless steel and ductile iron material options

3 PLATFORM CONFIGURATIONS

- Heavy-duty stationary base for fixed pump installations
- Drag skid for portable applications

4 MOTOR STOOL

- Rigid design keeps the pump and motor permanently aligned and provides easy access to the coupling

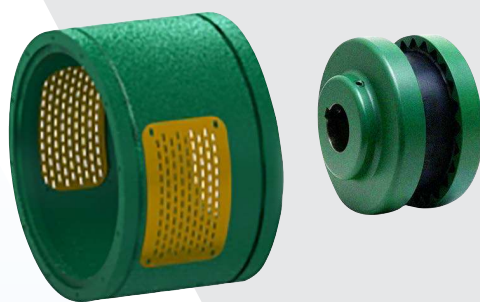
5 OPTIONS & ACCESSORIES

- Lifting bail
- Pump drain
- Pressure gauges
- Integrated VFD



NEVER LOSE ALIGNMENT

Like all Pioneer Pump systems, the ElectricPAK is engineered for performance and serviceability. The robust design includes a rigid bracket, known as a motor stool, that keeps the pump and motor permanently aligned, saving countless hours of service time. No need for time-consuming alignment work upon delivery or whenever the unit is moved. The modular design can also be disassembled quickly for reduced service and maintenance time.



ELECTRICPAK VFD OPTIONS

A variable frequency drive on the job site needs to be as tough as the environment it's in. That's why we've taken the best features of our most popular VFD system and re-packaged it to withstand the demands of transport and deliver a more intuitive startup experience with our SmartPrime™ touchscreen interface. You get the operating performance you need, packaged the way that works best for you: full ElectricPAK™ system or standalone skid.

ELECTRICPAK VFD



INTEGRATED ELECTRICPAK



SMARTPRIME CONTROL INTERFACE



The SmartPrime interface handles all aspects of operations with easy-to-navigate graphics, eliminating the need for complex keypad setup.



FE SELECT

SIZE. CONFIGURE. QUOTE.

STREAMLINED EXPERIENCE FROM SELECTION TO STARTUP

With 24/7 online and mobile-friendly availability, FE Select instantly helps you formalize your deliverables with printable and downloadable quotes: no waiting for a callback.

FE Select is the industry-leading online tool from Franklin Electric that makes configuring a Pioneer ElectricPAK easy for contractors, engineers, fleet managers and wholesale distributors. It's secure and free-to-use: input your performance requirements and FE Select will help you find the best ElectricPAK configuration to fit your needs.

GETTING WHAT YOU NEED HAS NEVER BEEN EASIER

- Configure and quote a full electric package to meet your application requirements, anytime and from any web-enabled device.
- Download full technical specifications and generate pricing in minutes.



Franklin Electric is a global leader in the manufacturing and distribution of products and systems focused on the movement and management of water. We offer pumps, motors, drives, and controls for use in a wide variety of agricultural, commercial, industrial, municipal, and residential applications.

Connect with Us!

